

# CERTIFICATE OF LOCATION OF GOVERNMENT CORNER

NORTHEAST Corner of Section 8, Township 107N, Range 40W

5th Principal Meridian, State of Minnesota, County of Murray.

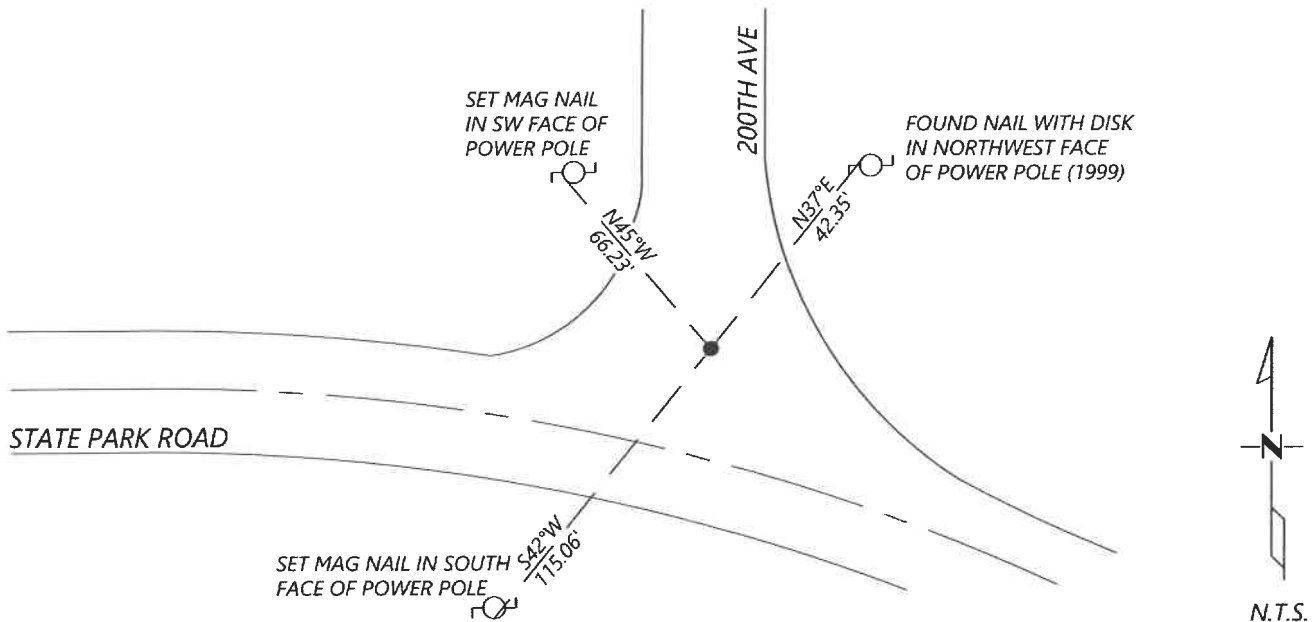
At the corner location shown on the sketch:

☒ On 11/07/2021 found a PK NAIL 0.2' BELOW ROAD SURFACE.  
DATE

☐ left monument as found ☐ lowered monument ☒ removed monument (explain)

☒ On 11/07/2021 placed a 1/2" REBAR CAPPED "RLS 57085" IN THE EXACT POSITION OF THE PREVIOUSLY FOUND PK NAIL.  
DATE

## SKETCH OF REFERENCE TIES



Statement of evidence for this corner location is on back of this page.

I hereby certify that this document was researched and prepared by me or under my direct supervision and that I am a licensed Land Surveyor under the laws of the State of Minnesota.

Signature [Signature]

Date 4-18-2022 License No. 57085

Title:

☒ Land Surveyor ☐ Professional Engineer  
☐ County Surveyor ☐ County Engineer

OFFICE OF THE COUNTY RECORDER

County of Murray

I hereby certify that this document was filed in the Co.

Recorder's office at \_\_\_\_\_ M. on the 22nd day of April, A.D. 20 22

County Recorder Karen Brown

by \_\_\_\_\_, Deputy

DOCUMENT NO. \_\_\_\_\_

SETH WECKMAN  
Minnesota License No. 57085

**Statement of Evidence:**

Northeast corner of Section 8, Township 107 North, Range 40 West, 5th Principal Meridian, Murray County, Minnesota.

- 1861 Lewis Brockman, U.S. Deputy Surveyor, set a post in mound.
- 1913 J.W. Woolstencroft, surveys describes a 9x14x20 stone with gray bricks and bolts around.
- 1988 Sioux Engineering, C. Allen Ringquist (LS 6700), files a corner certificate and states that a 3/4" iron stake was found at the intersection of township road and County Road 37.
- 1992 Unknown insert from Murray County, dug a 2ft x 1.7ft x 3.3ft hole and found a 3/4" iron pin and bridge spike at different locations.
- 1998 Minnesota Department of Transportation, C.S.A.H. 38 plans (S.P. 51-638-19), shows an iron pin at surface over stone Sta. 107+77.07
- 1999 Unknown insert from Murray County, placed a 5/8" x18" rebar after re-grade. Ties as shown:  
N&C PP NE 41.45'  
N&C PP NW 63.30'
- 2000 Unknown insert from Murray County, placed a P.K. nail.
- 2021 Westwood Professional Services searched the area and found a PK nail, 0.2ft below the road surface. The found monument is near the intersection of the road centerlines projected North/South/East/West. The position of the monument agrees with the C.S.A.H. 38 plans within reason and it agrees with the 1988 corner tie to the SW corner of Section 9. The field crew recovered one tie from the 1999 insert. Removed the PK nail and replaced it with a 1/2" rebar with cap marked, "RLS 57085". Established 2 additional reference ties.

*Analysis of the recovered data, field evidence and survey measurements, indicates that the monument found is the correct perpetuation of this corner. For additional information concerning this corner please contact Westwood Professional Services.*